



A History of Invention

Rajesh Pankaj
Senior Vice President, Engineering
Qualcomm Technologies Inc.
June 2017





QUALCOMM®

30

Years of driving
the evolution
of wireless

#1

Fabless
semiconductor
company

#1

in 3G/4G
LTE modem

842M

MSM chipsets
shipped FY'16

Source: Qualcomm Incorporated data. Currently, Qualcomm semiconductors are products of Qualcomm Technologies, Inc. or its subsidiaries. IHS, Mar. '17; Strategy Analytics, Mar. '17

We connected
the phone to
the Internet

Now we're connecting
everything around us



Driving 4G and 5G to their fullest potentials

Expanding and evolving LTE Advanced—setting the path to 5G

5G

Improve cost and energy efficiency
Enable a wide range of new services
A unified, much more capable platform



Further backwards-compatible
4G enhancements

Flat architecture Carrier aggregation Unlicensed spectrum FeICIC
TDD/FDD Relays SON+ CoMP Device-to-device Lower latency
SON Broadcast SIPTO Dual connectivity 256QAM V2X
Enhanced CA Massive/3D MIMO IoT



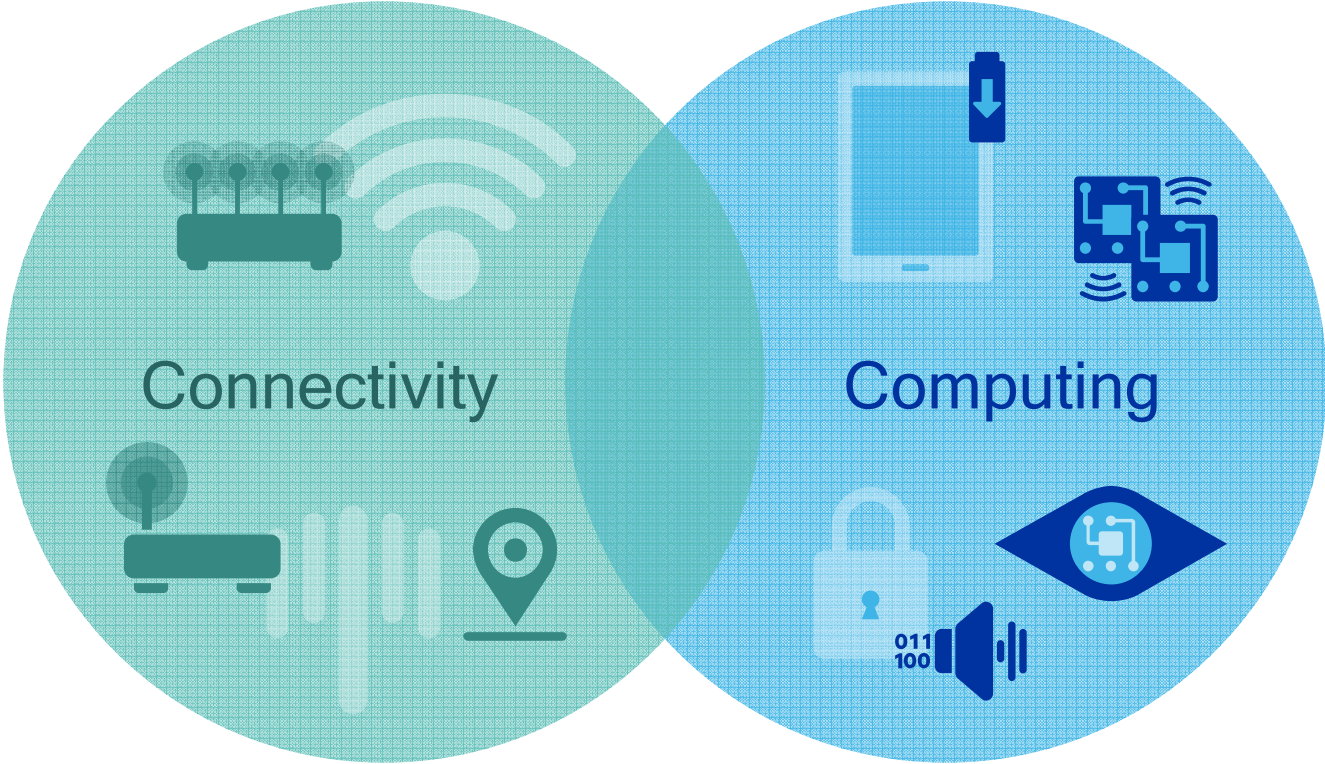
4G

2010

~2020

Qualcomm: Leading R&D innovation

>\$46 billion in
cumulative R&D

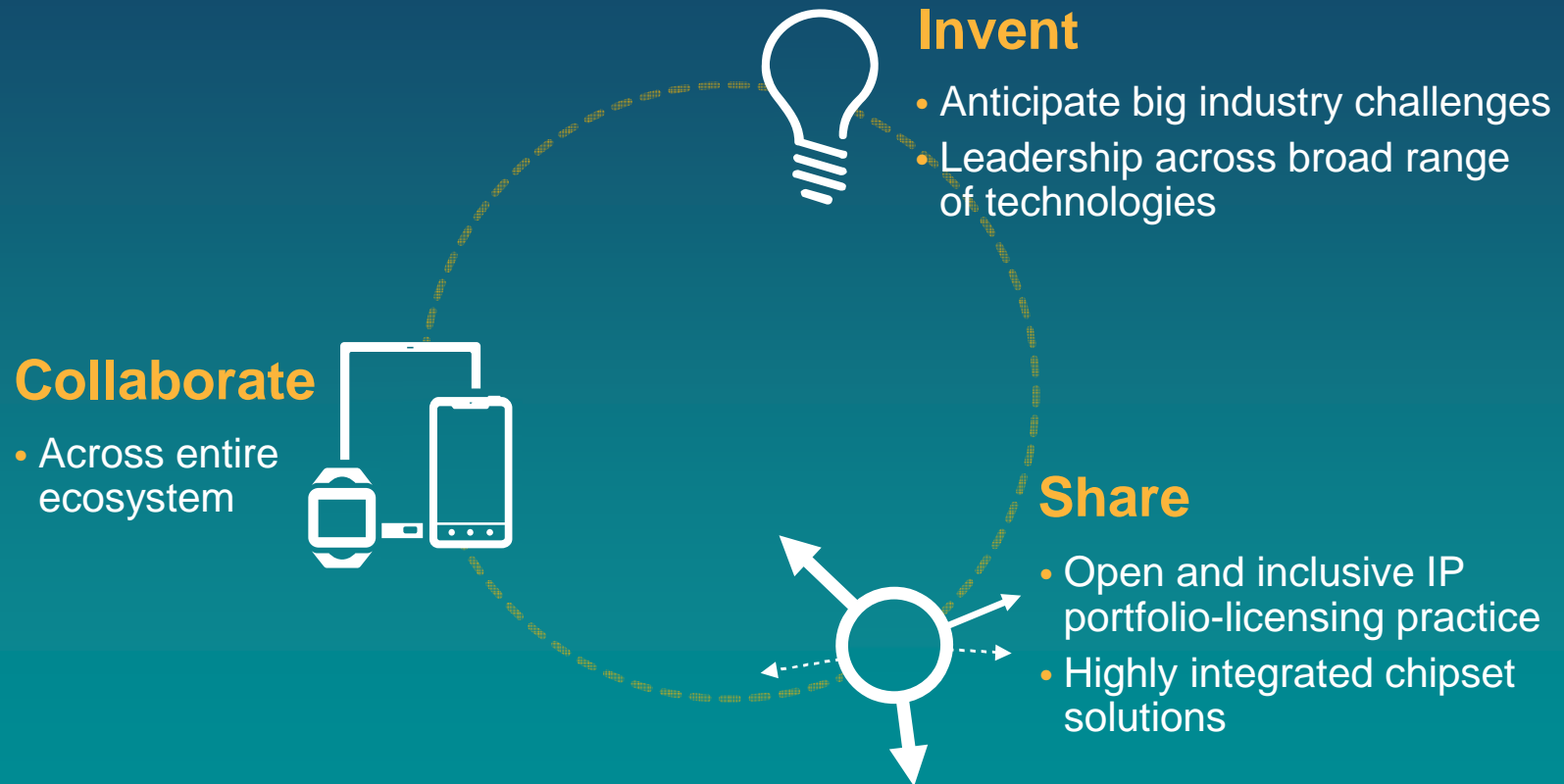


Source: Qualcomm data as of Dec 25, 2016 (Q2 FY17)

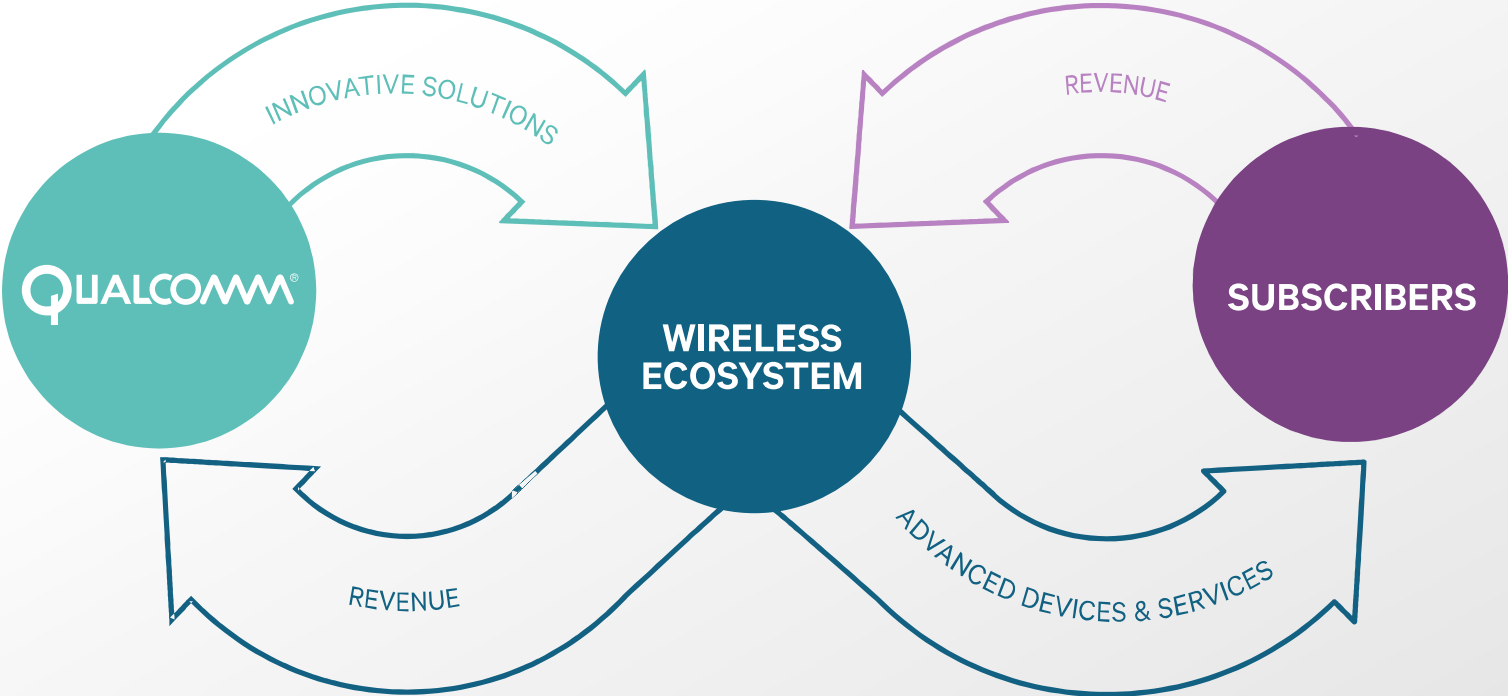
Ongoing technology innovation drives smartphone demand



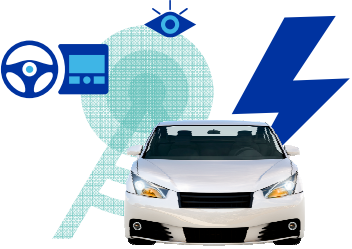
A proven model for mobile innovation



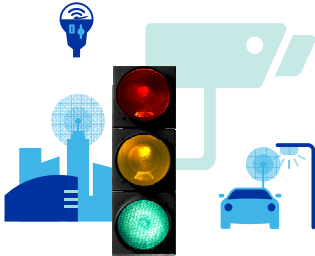
Qualcomm business model



Transforming industries



Automotive



Smart cities



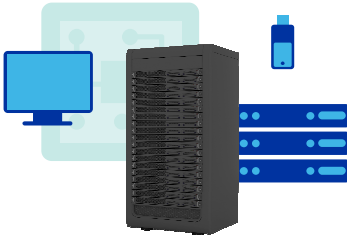
Wearables



Networking



Smart homes



Datacenter



Healthcare



Drones

Thank you

Follow us on:   

For more information, visit us at:

www.qualcomm.com & www.qualcomm.com/blog

Nothing in these materials is an offer to sell any of the components or devices referenced herein.

©2017 Qualcomm Technologies, Inc. and/or its affiliated companies. All Rights Reserved.

Qualcomm is a trademark of Qualcomm Incorporated, registered in the United States and other countries. Other products and brand names may be trademarks or registered trademarks of their respective owners.

References in this presentation to “Qualcomm” may mean Qualcomm Incorporated, Qualcomm Technologies, Inc., and/or other subsidiaries or business units within the Qualcomm corporate structure, as applicable. Qualcomm Incorporated includes Qualcomm’s licensing business, QTL, and the vast majority of its patent portfolio. Qualcomm Technologies, Inc., a wholly-owned subsidiary of Qualcomm Incorporated, operates, along with its subsidiaries, substantially all of Qualcomm’s engineering, research and development functions, and substantially all of its product and services businesses, including its semiconductor business, QCT.

